

1. AREA DETERMINED BY THE COORDINATE METHOD.
2. THIS PLAT REPRESENTS A SURVEY BASED ON THE LISTED REFERENCES AND THE RESULT OF A TITLE SEARCH.
3. COORDINATES BASED ON S.C. STATE PLANE COORDINATE SYSTEM, N.A.D., 1927.
4. VETLANDS REPORTED ON THIS PLAT ARE UNDER THE JURISDICTION OF THE U.S. CORPS OF ENGINEERS, AND ARE SUBJECT TO ITS PERMITTING AUTHORITY.
5. THIS AREA IS SITED IN ALLOWED ZONE C AS SHOWN ON FIRM PLAN #45413 02500. (REQUIRED RESURVEY 4, 1992).
6. LOT, MAXIMUM WIDTH: 100.00 FT  
LOT AREA PER DRILLING UNIT: 4000 SQ FT  
MINIMUM LOT WIDTH: 40 FT  
(EXCEPTING THAT ON CUL-DE-SACS  
ALONG FRONT PROPERTY LINE AND FOR  
TWO-THIRDS OF THE LOT DEPTH)  
LOT DEPTH: 50 FT  
MINIMUM SETBACKS:  
FRONT YARD: 4 FT  
SIDE YARD (MEASURED BETWEEN  
BUILDING LINE, NOT PROPERTY LINE): 15 FT  
REAR YARD: 20 FT  
MAXIMUM HEIGHT: 35 FT (2.5 STORIES)  
BUILDING COVERAGE  
7. NO STRUTTING SURFACES AND/OR MANICURED LAWNS  
ARE ALLOWED IN NATURAL SPACES. ONLY SELECTED CLEARING OF  
VEGETATION TO BE CONSIDERED AS ALLOWED, O.C.M.M. SHALL HAVE  
JURISDICTION IN THESE AREAS.  
8. NO FENCES SHALL BE ALLOWED IN THIS PROJECT.  
9. WASTEWATER TREATMENT SYSTEMS & POTABLE WATER SUPPLY:  
WASTEWATER GENERATED BY THE PLANT WILL BE TREATED AND  
DISPOSED OF BY THE PLANT'S OWNERS AND SEWER  
CONNECTIONS AT THEIR TREATMENT PLANT IN MT. PLEASANT (NPDES  
SC 0021268)  
POTABLE WATER WILL BE SUPPLIED BY THE MT. PLEASANT WATER-  
WORKS AND SEWER COMMISSION.  
10. LANDSCAPED ISLANDS IN R/W TO BE MAINTAINED BY THE HOMEOWNERS

QWEE	RADII	LENGTH	TANGENT	CHORD	BARANG	DELTA
C1	517.00	84.44	42.34	84.39	581.441 40E	29.714
C2	520.00	84.44	42.34	84.39	581.441 40E	29.714
C3	523.00	118.116	81.59	118.84	589.170 0W	15.944
C4	526.00	118.116	81.59	118.84	589.170 0W	15.944
C5	529.00	108.45	70.25	108.25	589.170 0W	15.944
C6	532.00	108.45	70.25	108.25	589.170 0W	15.944
C7	535.00	108.45	70.25	108.25	589.170 0W	15.944
C8	538.00	253.10	156.84	253.33	581.382 0W	15.944
C9	541.00	138.60	87.83	138.63	581.382 0W	15.944
C10	544.00	95.35	48.85	95.82	588.722 0W	17.992
C11	547.00	95.35	48.85	95.82	588.722 0W	17.992
C12	550.00	58.80	29.59	57.92	583.180 0E	58.754
C13	553.00	58.80	29.59	57.92	583.180 0E	58.754
C14	556.00	35.82	17.58	35.80	583.800 0E	58.754
C15	559.00	35.82	17.58	35.80	583.800 0E	58.754
C16	562.00	62.00	31.44	62.22	583.800 0E	58.754
C17	565.00	78.84	39.67	77.48	584.330 0E	58.754
C18	568.00	62.00	31.44	62.22	583.800 0E	58.754
C19	571.00	55.84	27.93	55.85	583.800 0E	58.754
C20	574.00	55.84	27.93	55.85	583.800 0E	58.754
C21	577.00	33.87	16.88	33.54	586.500 0E	58.754
C22	580.00	33.87	16.88	33.54	586.500 0E	58.754
C23	583.00	60.41	30.31	60.31	585.774 0E	58.754
C24	586.00	60.41	30.31	60.31	585.774 0E	58.754
C25	589.00	60.41	30.31	60.31	585.774 0E	58.754
C26	592.00	60.41	30.31	60.31	585.774 0E	58.754
C27	595.00	60.41	30.31	60.31	585.774 0E	58.754
C28	598.00	12.84	5.32	12.84	581.734 0E	58.754
C29	601.00	12.84	5.32	12.84	581.734 0E	58.754
C30	604.00	12.84	5.32	12.84	581.734 0E	58.754
C31	607.00	12.84	5.32	12.84	581.734 0E	58.754
C32	610.00	60.01	30.01	60.01	583.500 0E	58.754
C33	613.00	60.01	30.01	60.01	583.500 0E	58.754
C34	616.00	60.01	30.01	60.01	583.500 0E	58.754
C35	619.00	60.01	30.01	60.01	583.500 0E	58.754
C36	622.00	60.01	30.01	60.01	583.500 0E	58.754
C37	625.00	60.01	30.01	60.01	583.500 0E	58.754
C38	628.00	60.01	30.01	60.01	583.500 0E	58.754
C39	631.00	60.01	30.01	60.01	583.500 0E	58.754
C40	634.00	60.01	30.01	60.01	583.500 0E	58.754
C41	637.00	60.01	30.01	60.01	583.500 0E	58.754
C42	640.00	60.01	30.01	60.01	583.500 0E	58.754
C43	643.00	60.01	30.01	60.01	583.500 0E	58.754
C44	646.00	60.01	30.01	60.01	583.500 0E	58.754
C45	649.00	60.01	30.01	60.01	583.500 0E	58.754
C46	652.00	60.01	30.01	60.01	583.500 0E	58.754
C47	655.00	60.01	30.01	60.01	583.500 0E	58.754
C48	658.00	60.01	30.01	60.01	583.500 0E	58.754
C49	661.00	60.01	30.01	60.01	583.500 0E	58.754
C50	664.00	60.01	30.01	60.01	583.500 0E	58.754
C51	667.00	60.01	30.01	60.01	583.500 0E	58

Charleston, South Carolina  
Office of Register Mesne Conveyance

Plat recorded on 9 day of June 1957 at  
152 and trading cloth  
copy filed on 15 day of June 1957. Drawing  
No. 152 of 152 (total) plat(s) deemed to  
be 152 plat(s).

*Chas. C. Leonard*  
Register Mesne Conveyance

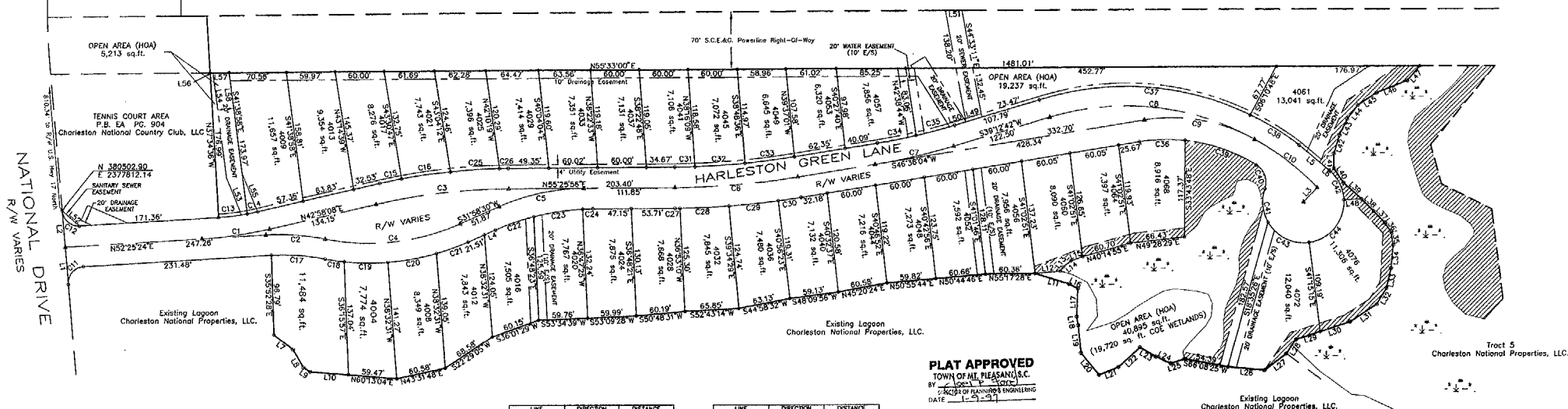
### OWNERS ACKNOWLEDGEMENT

The Owner of Record of the land shown on this plat and whose name is subscribed thereto, and in person or through a duly authorized agent, acknowledges that this plat was made from an actual survey and dedicates to the use of the public forever the following:

**Public Road Area: 2.300 Acres**  
**All Drains & Easements**

Waller & Mendenhall, Inc.  
For Charleston National Properties, LLC

OWNER/ SUBDIVIDER  
CHARLESTON NATIONAL PROPERTIES, LLC  
1251 National Drive  
Mt. Pleasant, S.C. 29464  
(803) 884-6014



TOTAL LOTS THIS PHASE = 34

TOTAL AREA IN LOTS = 6.423 ac.

TOTAL AREA IN OPEN AREAS = 1.526 ac.

TOTAL AREA IN ROAD RIGHT-OF-WAY = 2.300 ac.

TOTAL AREA THIS PHASE = 10.249 ac.

SURVEYOR'S CERTIFICATE

It is hereby certified that this plot is true and correct as was prepared from an actual survey of the property, made by me or under my supervision; that all monuments shown hereon actually exist and their location, size, type and material are correctly shown

## General Property Survey

I, F. Elliott Quinn, III, a Registered Professional Land Surveyor in the State of South Carolina, certify to owner(s) shown hereon that this survey shown hereon was made in accordance with the requirements of the Minimum Standards Manual for the Practice of Land Surveying in South Carolina, and meets or exceeds the requirements for a Class A survey as specified therein.




F. Ellotte Quinn, III, R.L.S. Date: 119 197  
S.C. Registration Number 10292

This is not a true valid copy of this document unless bearing an original signature and a raised embossed seal of the surveyor.

LINE	DIRECTION	DISTANCE
L1	S30W45E	46.55'
L2	N45E45E	44.44'
L3	S10W11E	24.84'
L4	N16W50E	24.44'
L5	N63E15E	14.44'
L6	N84E15E	14.97'
L7	N65E50E	24.44'
L8	N44E12E	25.22'
L9	S86W4E	47.44'
L10	N65E45E	47.44'
L11	N73W12E	47.44'
L12	S61W10E	11.66'
L13	N61E10E	6.56'
L14	N16E12E	11.66'
L15	N65E12E	11.66'
L16	N83W10E	12.25'
L17	N11W6E	12.25'
L18	N44E14E	10.28'
L19	N65E14E	10.28'
L20	S74E28E	24.67'
L21	S74E28E	24.67'
L22	S65E14E	24.67'
L23	S65E14E	24.67'
L24	S65E14E	24.67'
L25	S65E14E	24.67'
L26	S65E14E	24.67'
L27	S65E14E	24.67'
L28	S65E14E	24.67'
L29	S65E14E	24.67'
L30	N65E14E	24.67'
L31	N65E14E	24.67'
L32	N65E14E	24.67'
L33	N65E14E	24.67'
L34	N65E14E	24.67'
L35	N65E14E	24.67'
L36	N65E14E	24.67'
L37	N65E14E	24.67'
L38	N65E14E	24.67'
L39	N65E14E	24.67'
L40	N65E14E	24.67'
L41	N65E14E	24.67'
L42	N65E14E	24.67'
L43	N65E14E	24.67'
L44	N65E14E	24.67'
L45	N65E14E	24.67'
L46	N65E14E	24.67'
L47	N65E14E	24.67'
L48	N65E14E	24.67'
L49	N65E14E	24.67'
L50	N65E14E	24.67'
L51	N65E14E	24.67'
L52	N65E14E	24.67'
L53	N65E14E	24.67'
L54	N65E14E	24.67'
L55	N65E14E	24.67'
L56	N65E14E	24.67'
L57	N65E14E	24.67'
L58	N65E14E	24.67'
L59	N65E14E	24.67'
L60	N65E14E	24.67'
L61	N65E14E	24.67'
L62	N65E14E	24.67'
L63	N65E14E	24.67'
L64	N65E14E	24.67'
L65	N65E14E	24.67'
L66	N65E14E	24.67'
L67	N65E14E	24.67'
L68	N65E14E	24.67'
L69	N65E14E	24.67'
L70	N65E14E	24.67'
L71	N65E14E	24.67'
L72	N65E14E	24.67'
L73	N65E14E	24.67'
L74	N65E14E	24.67'
L75	N65E14E	24.67'
L76	N65E14E	24.67'
L77	N65E14E	24.67'
L78	N65E14E	24.67'
L79	N65E14E	24.67'
L80	N65E14E	24.67'
L81	N65E14E	24.67'
L82	N65E14E	24.67'
L83	N65E14E	24.67'
L84	N65E14E	24.67'
L85	N65E14E	24.67'
L86	N65E14E	24.67'
L87	N65E14E	24.67'
L88	N65E14E	24.67'
L89	N65E14E	24.67'
L90	N65E14E	24.67'
L91	N65E14E	24.67'
L92	N65E14E	24.67'
L93	N65E14E	24.67'
L94	N65E14E	24.67'
L95	N65E14E	24.67'
L96	N65E14E	24.67'
L97	N65E14E	24.67'
L98	N65E14E	24.67'
L99	N65E14E	24.67'
L100	N65E14E	24.67'

LINE	DIRECTION	DISTANCE
D60	N 35° 11' 30" E	30.00
D61	N 35° 11' 30" E	30.00
D62	N 02° 40' 17" W	23.23
D63	N 02° 40' 17" W	23.23
D64	N 02° 40' 17" W	23.23
D65	N 44° 41' 28" E	17.65
D66	N 44° 41' 28" E	17.65
D67	N 7° 58' 00" W	26.07
D68	N 7° 58' 00" W	26.07
D69	N 81° 52' 24" E	25.9
D70	N 81° 52' 24" E	25.9
D71	N 88° 08' 58" W	20.4
D72	N 88° 08' 58" W	20.4
D73	N 16° 51' 10" W	21.4
D74	N 16° 51' 10" W	21.4
D75	N 03° 13' 28" E	20.2
D76	N 03° 13' 28" E	20.2
D77	N 24° 42' 00" E	20.05
D78	N 24° 42' 00" E	20.05
D79	N 08° 32' 08" E	22.35
D80	N 08° 32' 08" E	22.35
D81	N 12° 12' 44" E	21.2
D82	N 39° 14' 30" E	21.2
D83	N 58° 42' 00" E	20.0
D84	N 58° 42' 00" E	20.0
D85	S 41° 38' 58" E	128.8
D86	S 41° 38' 58" E	128.8
D87	S 58° 20' 30" E	8.3
D88	S 58° 20' 30" E	8.3
D89	S 45° 31' 00" E	12.0
D90	S 45° 31' 00" E	12.0

**LEGEND:**

- IRON PIN NEW (5/8" ROD)  
 ■ CONCRETE MONUMENT NEW  
 ▲ ROAD CENTERLINE POINT (N&W SET)  
 COE JURISDICTIONAL WETLAND  
 NATURAL BUFFER  
 HOMEOWNERS ASSOCIATION

**REFERENCES:**

1. PLAT BY SOUTHEASTERN SURVEYING, INC.  
REVISED 26 MARCH, 1991  
PLAT BOOK CC, PAGES 128  
RMC, CHARLESTON COUNTY
2. TMS No. 598-00-00-013

FINAL SUBDIVISION PLAT OF  
HARLESTON GREEN  
*Charleston National*  
LOTS 4000 THRU 4076, TRACT 5  
TOWN OF MT. PLEASANT  
CHARLESTON COUNTY, SOUTH CAROLINA

DECEMBER 31, 1996 SCALE: 1" = 60'

60	30	0	60	120	180
----	----	---	----	-----	-----

SCALE IN FEET

— 2 —

# SOUTH STAR ★ SURVEYING

LIVE OAK CENTER, 416 LIVE OAK DRIVE, MT. PLEASANT, S.C. 29464. (803) 884-1111